



Planning &
Environment

Greater Macarthur

PRELIMINARY LAND RELEASE STRATEGY

**Find out
more about
proposed
areas for
new local
communities**



The NSW Government has been working closely with Campbelltown and Wollondilly councils and government agencies to investigate the possibility of releasing land for new homes and jobs in the Greater Macarthur area.

The Greater Macarthur Preliminary Land Release Strategy identifies:



Opportunities for more homes and jobs in Menangle Park and Mount Gilead, plus a new town at Wilton



A planning vision for the next 20 years – to guide how new communities will develop



The infrastructure required to meet future needs

This will be the first major land release in Greater Sydney for a decade. It will add to the 70,000 new homes the Department has helped to deliver over the past four years by releasing or rezoning land across Sydney.

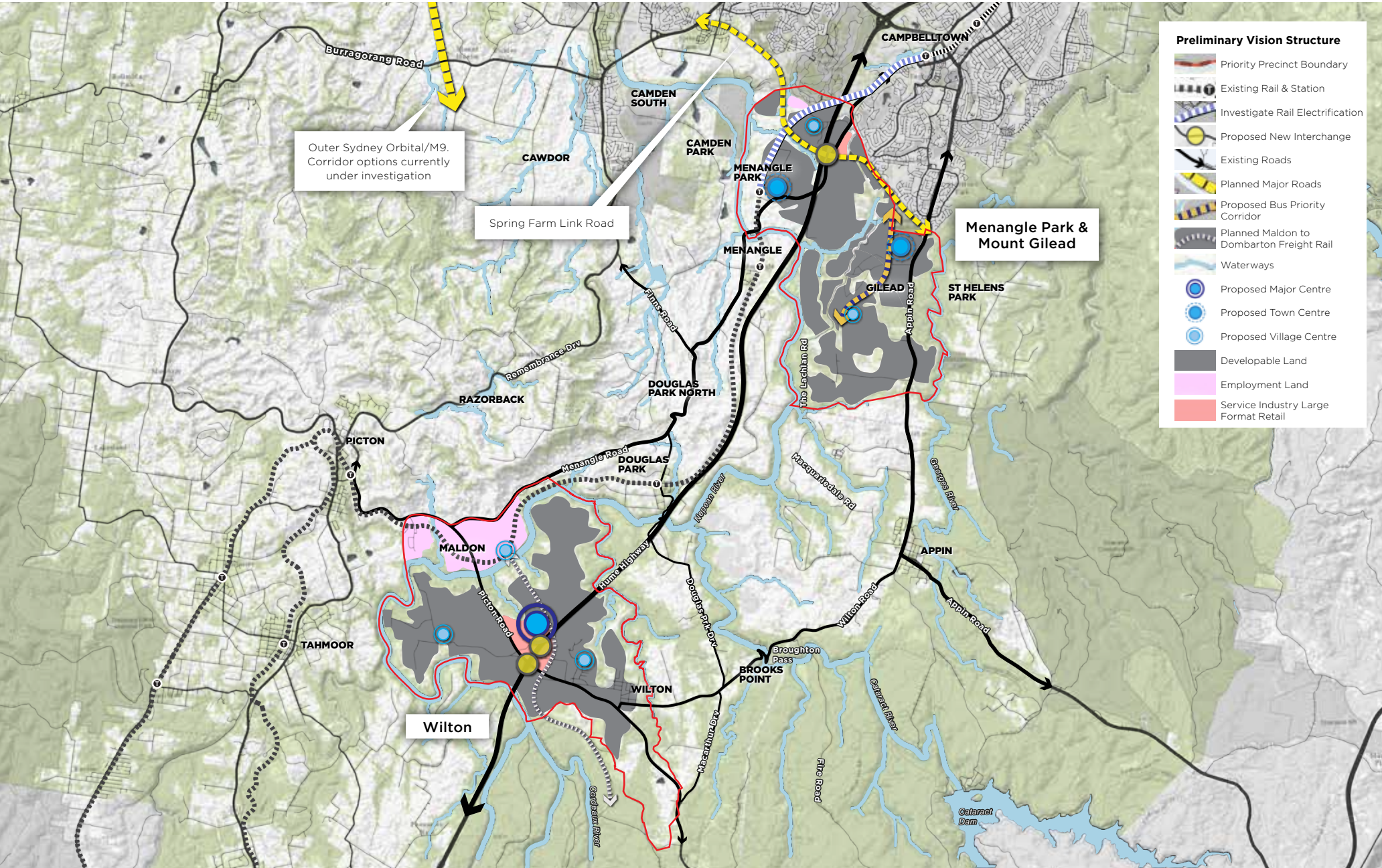
Releasing more land for homes will mean Sydneysiders have access to a range of homes that suit different needs, budgets and lifestyle choices. It will also help to place downward pressure on housing prices while creating local employment opportunities.

This is an exciting opportunity for new homes and jobs in Menangle Park and Mount Gilead, plus a new town at Wilton.

To find the best place for new towns, we studied the local environment, mining and coal seam gas operations.

With careful planning, we can maintain the area's rural lifestyle and conserve heritage while creating opportunities to build new towns close to transport, infrastructure and services that meet the needs of local communities. Your feedback will form an important piece of this puzzle.

Greater Macarthur Preliminary Land Release Strategy



How can I get involved?

Community input is an important part of the planning process and we want to hear your feedback to help finalise the vision for Greater Macarthur.

There are a number of ways you can access information and let us know what you think.

View the documents

The Greater Macarthur Preliminary Land Release Strategy is out for consultation until **4 November 2015**.

We are also proposing to amend *State Environmental Planning Policy (Sydney Region Growth Centres) 2006* to identify Menangle Park/Mount Gilead and Wilton as priority growth areas.

You can view the documents at www.planning.nsw.gov.au/greatermacarthur

Please have your comments to us by **4 November 2015**.

You can see the public exhibition documents at:

- ▶ Department of Planning and Environment
23-33 Bridge Street
Sydney
- ▶ Department of Planning and Environment
(Parramatta Office)
Level 5, 10 Valentine Avenue
Parramatta
- ▶ Campbelltown City Council
91 Queen Street
Campbelltown

- ▶ HJ Daley Library
1 Hurley Street
Campbelltown
- ▶ Wollondilly Shire Council
Frank McKay Building
62-64 Menangle Street
P O Box 21
Picton

Make a submission online

www.planning.nsw.gov.au/greatermacarthur

Write to us

Department of Planning and Environment
Housing Land Release
GPO Box 39
Sydney NSW 2001

Next steps

Your comments will be used to inform more detailed plans for the area which will be exhibited later this year.

In the meantime, further technical studies will look at the infrastructure needed to support local transport and access, open space, community facilities and public amenity to plan for the future.

Contact us

The Community Relations team can be contacted between 9.00am and 5.00pm (Monday to Friday) by:

 **Phone:** 1300 730 550

 **Email:** community@planning.nsw.gov.au

 **Fax:** 02 9895 7670

If you are deaf or have a hearing or speech impairment, call us through the National Relay Service:

- **TTY users**, call 133 677 and ask for 1300 730 550
- **Speak and Listen** (speech to speech relay) users, call 1300 555 727

and ask for 1300 730 550

- **Internet relay users**, connect to the NRS (www.relayservice.com.au) and ask for 1300 730 550

Translating & Interpreting Service: Please telephone 131 450.

Ask for an interpreter in your language and request to be connected to (02) 9228 6333 – Planning & Environment Information Centre. Local call cost from fixed phones. Calls from mobiles at applicable rates.

Leaflet published September 2015



**Planning &
Environment**